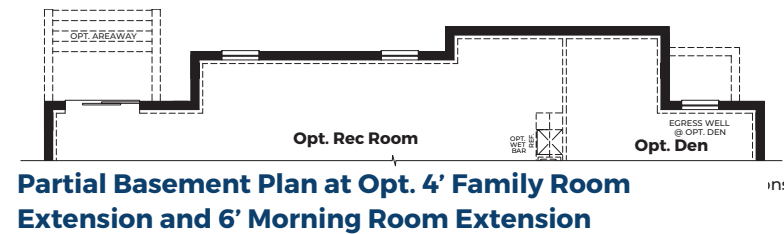


The Carson

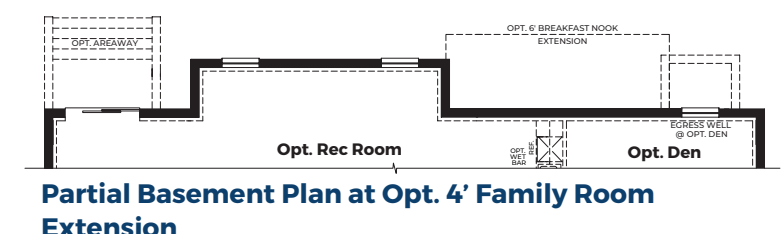
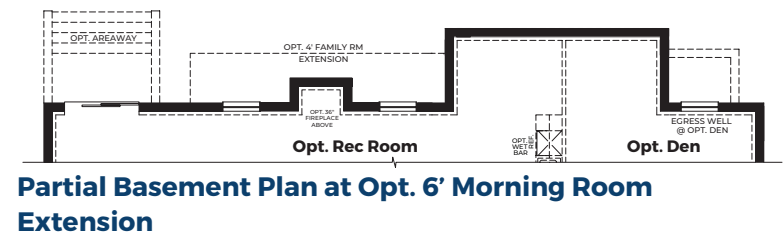
4 Bedrooms | 2.5 Bathrooms | 2-Car Garage | 3,724+ SF



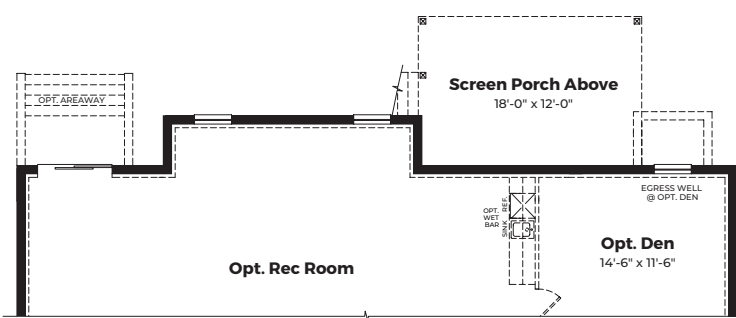
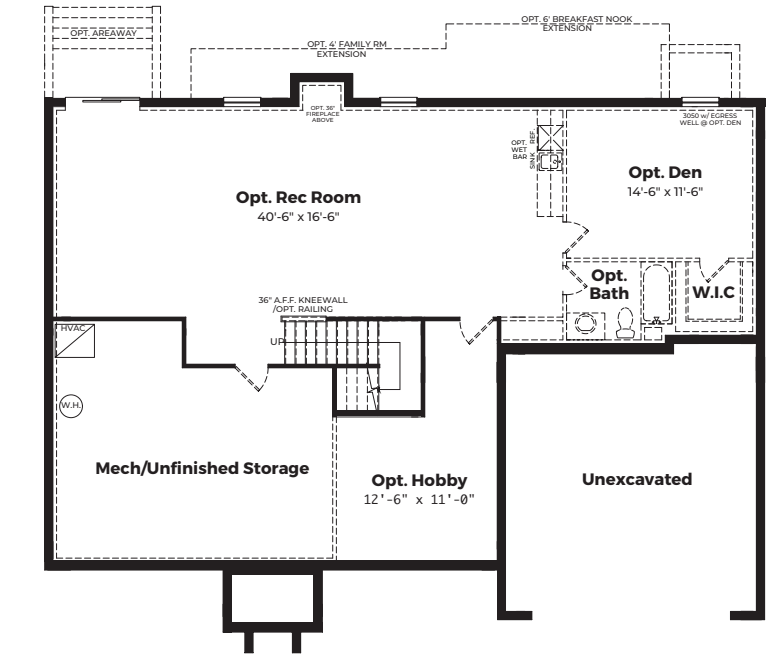
FEDERAL WITH STONE



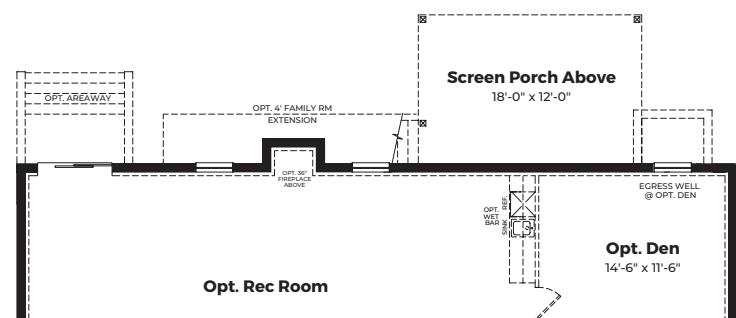
FEDERAL WITH PORCH



FARMHOUSE WITH STONE



Partial Basement Plan at Opt. Screen Porch and Family Room Extension

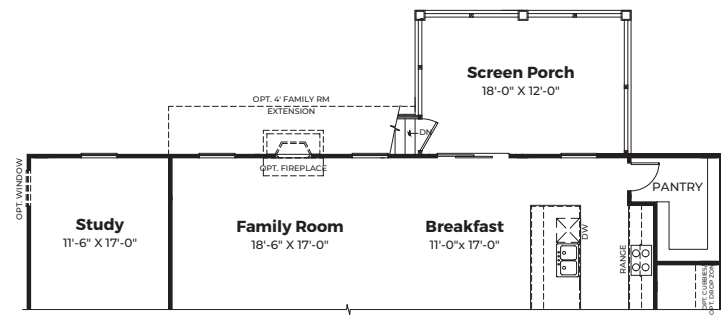


Partial Basement Plan at Opt. Screen Porch

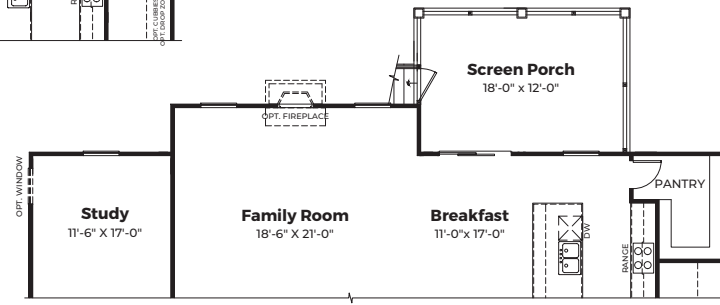


CRAFTSMAN

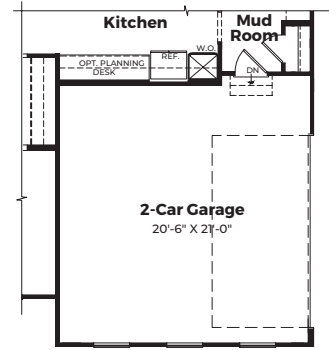
BASE PRICE	
HOMESITE NUMBER	
HOMESITE PREMIUM	
OPTIONS	
TOTAL	



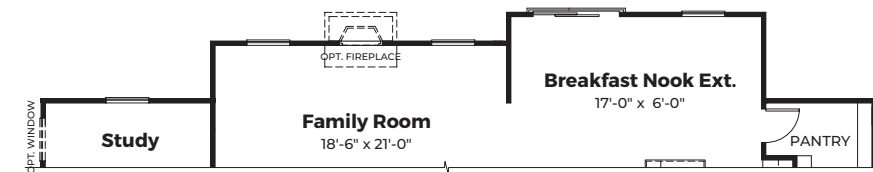
Partial First Floor at Opt. Screen Porch



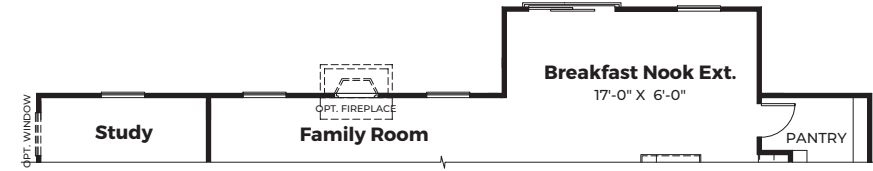
Partial First Floor at Opt. Screen Porch & Family Room Extension



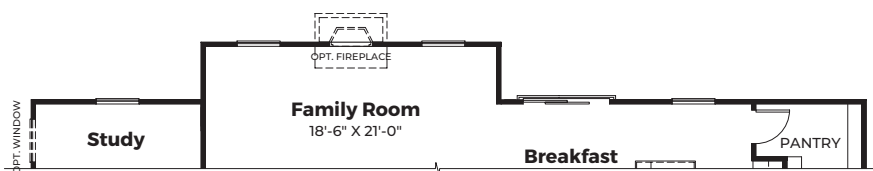
Partial First Floor plan at 2-Car Side-Load Garage



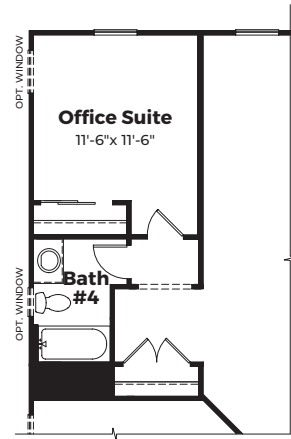
Partial First Floor at Opt. 4' Family Room Extension and Opt. 6' Breakfast Nook Extension



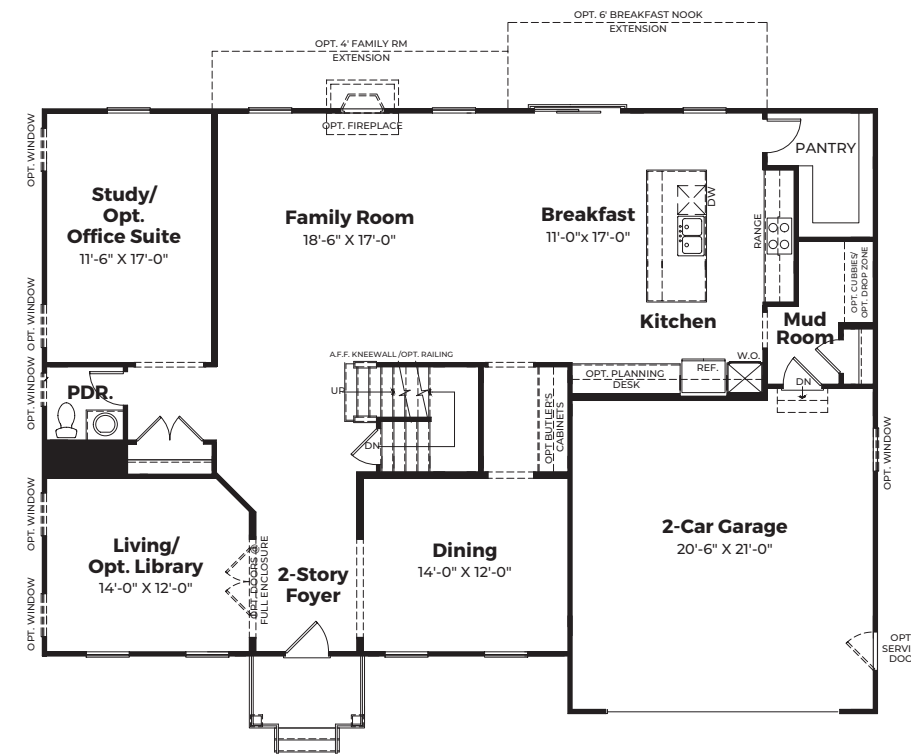
Partial First Floor at Opt. 6' Breakfast Nook Extension



Partial First Floor at Opt. 4' Family Room Extension

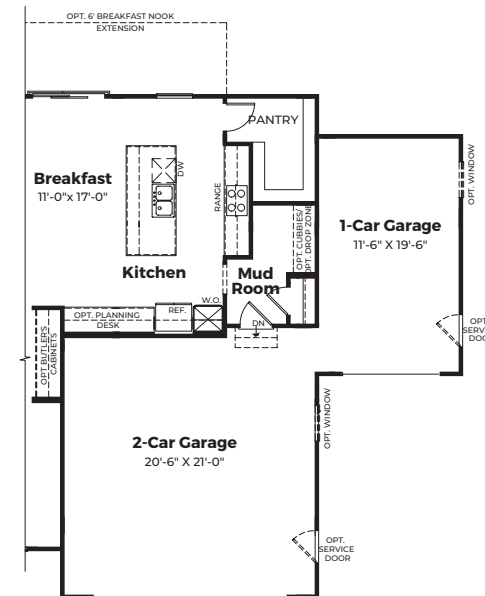


Partial First Floor plan at Opt. Office Suite

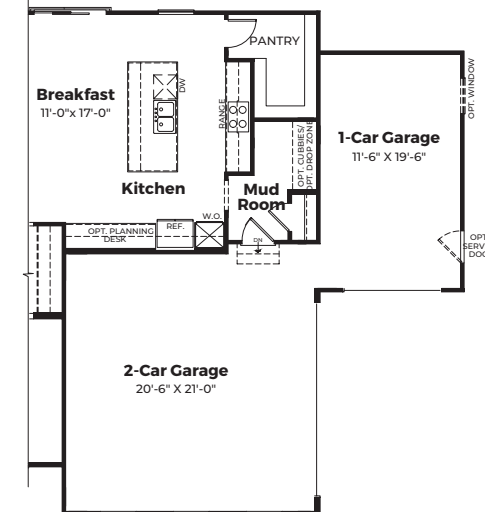


Partial First Floor at Opt. 3/4 Porch - Federal

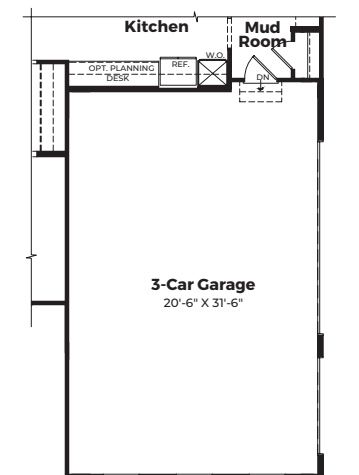
MAIN LEVEL



Partial First Floor at 3-Car Front-Load Garage

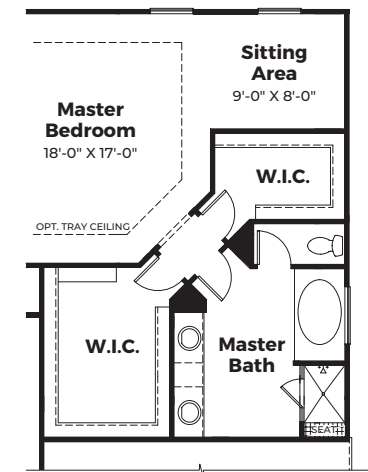
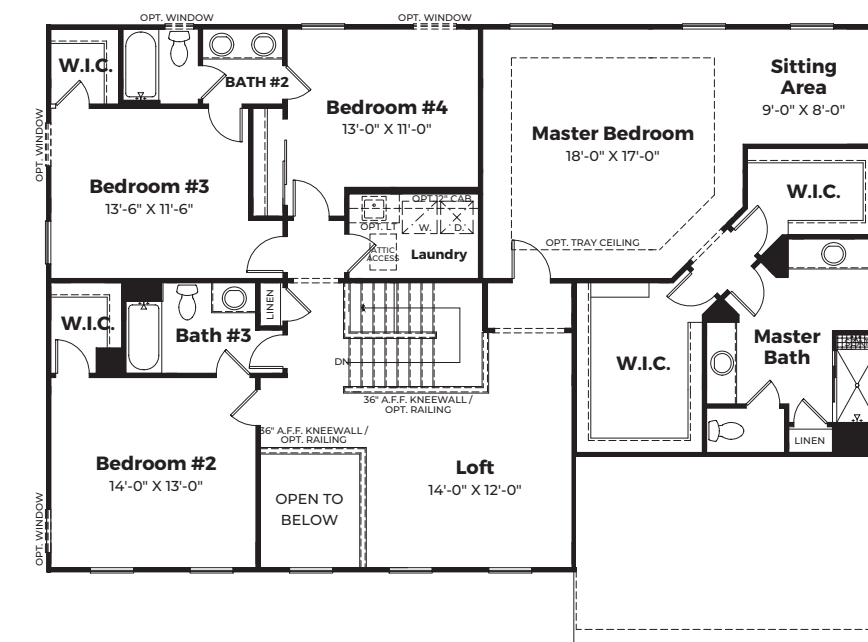


Partial First Floor at 3-Car Side-Load Garage



Partial First Floor at 3-Car Side-Load Garage

MAIN LEVEL OPTIONS



Part. Second Floor Plan @ Opt. 5-piece Owner's Bath

SECOND FLOOR